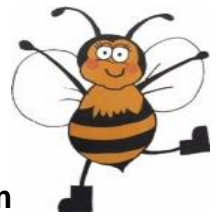




# BOOKHAM BEES WI

## Newsletter 83– May 2025

Bookham Bees meet the 1<sup>st</sup> Wednesday of the month,  
in The Old Barn Hall, Church Road, Great Bookham 7.15pm for 7.30pm



### EVENTS FOR MAY

#### MONTHLY MEETING

**MAY 7<sup>th</sup>**

**THE ORPHEUS TRUST**

**Anne Lovelace OBE**

gives us a fascinating insight into the Trust that  
Richard Stilgoe founded and how it uses performing arts to teach independence  
and functional skills for young adults. An absorbing talk

Thursday	1 <sup>st</sup>	Thursday Walkers
		Sewing Group
Wednesday	7 <sup>th</sup>	Meeting
Thursday	8 <sup>th</sup>	London Walking Group
Sunday	11 <sup>th</sup>	Sunday lunch group
Wednesday	14 <sup>th</sup>	Pub Night
Thursday	15 <sup>th</sup>	Coffee Morning
Friday	16 <sup>th</sup>	Gin Group1
Saturday	17 <sup>th</sup>	Bridge Group
Tuesday	20 <sup>th</sup>	Family History Group
Wednesday	21 <sup>st</sup>	Wednesday Walkers
		Lunch Group
		Cheese and Wine
Thursday	22 <sup>nd</sup>	Gardening Afternoon Tea
		Theatre outing Fiddler on the Roof
Monday	26 <sup>th</sup>	Cinema/Movie Group
Tuesday	27 <sup>th</sup>	Book Group 3
		Book Group 4
		Spirited Bees Group
Wednesday	28 <sup>th</sup>	Knitting Group
Monday mornings		Walkie talkie 2 9.30am
Wednesday mornings		Walkie talkie 1 8.00am

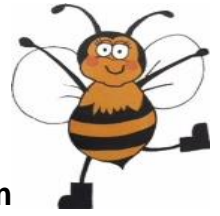




# BOOKHAM BEES WI

## Newsletter 83– May 2025

Bookham Bees meet the 1<sup>st</sup> Wednesday of the month,  
in The Old Barn Hall, Church Road, Great Bookham 7.15pm for 7.30pm



### **FUTURE MONTHLY MEETINGS 2025**

**JUNE 4<sup>th</sup>**

**PREPARATION FOR VILLAGE DAY** with a quiz/chatter/fun

**JULY 2<sup>nd</sup>**

**MARY FRANCES TRUST**

This charity offers mental health and wellbeing support to anyone over 16 years old. Founded 30 years ago and based in Leatherhead, it came second in our vote for a charity to support. Come and see how to protect and help ourselves.

**AUGUST 6<sup>TH</sup>**

**DRINKS AND NIBBLES ON THE GREEN** with fun and games

**SEPTEMBER 3<sup>rd</sup>**

**SIGN LANGUAGE**

**Lindsay Burrell** changes image from her fun Burlesque talk to bring us an engaging talk on her other love, communicating with those who have difficulties speaking. Well worth listening to this entertaining speaker.

**OCTOBER 1<sup>ST</sup>**

**FIRST RESPONDERS**

Another chance to refresh yourselves on life saving techniques. The team was fantastic last year so do attend whether you need to refresh or learn from the beginning. All skills need reinforcing regularly.

**NOVEMBER 5<sup>TH</sup>**

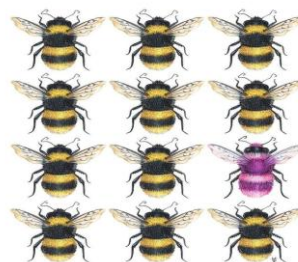
**CARDIAC RISK IN THE YOUNG (CRY)**

A talk from our charity of the year who, since 1995, have been working to reduce the incidence of sudden cardiac death through screening, support and research. There is much to learn here that could affect our children and grandchildren. This is also our AM month.

**DECEMBER 3<sup>RD</sup>**

**A LOVELY SURPRISE CHRISTMAS MEETING**

**Watch this space!!**



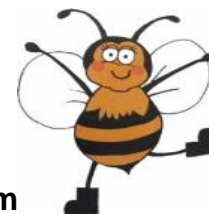
Bee Different



# BOOKHAM BEES WI

## Newsletter 83– May 2025

Bookham Bees meet the 1<sup>st</sup> Wednesday of the month,  
in The Old Barn Hall, Church Road, Great Bookham 7.15pm for 7.30pm



### WHAT HAVE WE BEEN DOING THIS MONTH?

#### APRIL MEETING

Well it was worth being another year older to have such a fun evening. I think Karen has a job for life devising such delicious canapes to go with the Prosecco and encourage everyone to mingle and chat. On second thoughts do we all need much encouragement in this? Hmm... The game of bingo was great fun, even though I missed out on the prize, and with yet more culinary delights provided by quickly taken up scrumptious cakes made by Helen, the evening was a success. The free raffle was popular with wonderful prizes as an extra birthday present.

Thank you to all involved in this celebration although we missed Jenny who was still recovering from her op. She will be back though!



#### Groups

##### Air fryer Group

The group continues to share experiences good and bad and tips to help. The meringue was not a success but luckily was destined for an Eton Mess so it was usable, while the chicken and chorizo kebabs with potato skins looked delicious.



#### Book Groups

##### Book Group 2

The Secret Scripture. Author Sebastian Barry  
A mental hospital is about to be shut down, and the psychiatrist tries to investigate the history of his 100 patient who was committed as a young woman, her record long lost or eaten by the rats. Meanwhile, she is secretly writing her journal – to be found after her death. The story starts in 1930s rural Ireland, against the background of The Troubles and the control and power of the Catholic Church.

Although we really liked this book and the characters, it was difficult to get into initially. Personally, I enjoyed hearing a little of the social history of that time, and has led me to investigating more of my family history.

We scored it 7.5

Anne Tait

### WHAT HAVE WE BEEN DOING THIS MONTH?

#### Book Group 3

The Elegance of the Hedgehog by Muriel Barbery

This book is set in the centre of Paris in an elegant apartment building. Renee the Concierge is witness to the lavish lives of her numerous employers, but unbeknown to them Renee is cultured, adores art, music & Japanese culture.

We found the book difficult to get into & there were lots of words that were unnecessary & seemed to want to be clever.

Scores varied from 2 to 7 Overall 3.8

Book Club 3 now meets on the 4th Tuesday monthly at 1pm to 2.45pm taking turns to host in our homes.

If anyone is interested in joining a Book Club we now have 2 spaces.

Jan Dunlop

#### Book Group 4

The Paris Library by Janet Skeslien Charles.

This story is about the heroic librarians at the American Library in Paris during World War 2. It covers romance, friendship & family & is based on a true story. We learnt that there was a programme to send books to soldiers, and the librarians hand delivered books to the Jewish subscribers. The book follows Odile (the main character) from 1939 to 1983.

It's interesting that a good few of us found the book tricky to get into & then the story suddenly clicked.

Overall Score: 8.1

Jan Dunlop

#### Bridge

Bridge Group 1 met early in April because of Easter .

One of our group was celebrating a landmark birthday so in gorgeous sunshine we enjoyed the hospitality of the club ,had afternoon tea and Prosecco, watched the golfers, chatted hard and even fitted in some bridge hands as well.

In May we are meeting on 17<sup>th</sup> of May

Jane Carradine

#### Cheese and Wine

A very lively evening was held at Diane's this month, with a theme of New Zealand for the wine and 'soft cheese' to go with it. Top of the wines were a Pinot Gris (Majestic) from Nelson, and a (Sainsburys) Sauvignon Blanc. Top cheese was definitely a barrel aged feta from Waitrose, very closely followed by a Brie with Pecan nuts from Lidl. Next month our theme is Italy ... watch this space!

Julie Ryder

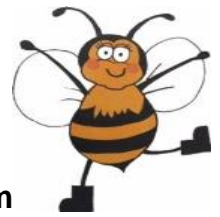






# BOOKHAM BEES WI

## Newsletter 83– May 2025



Bookham Bees meet the 1<sup>st</sup> Wednesday of the month,  
in The Old Barn Hall, Church Road, Great Bookham 7.15pm for 7.30pm

### WHAT HAVE WE BEEN DOING THIS MONTH?

#### Sewing Group

The teddy bear marathon continues with bears being made both by such cuddly fabric kindly donated by Edna, and other materials. More to make and now the stuffing starts too! The first picture shows the stages of teddy making up to stuffing stage. Let's hope we have many children who want to buy tickets for the teddy tombola. Do encourage any child you know to have a go.



#### Supper group

What a wonderful evening we had at our May supper club at the Malai Thai in Leatherhead. (This restaurant for those of you who don't know it is situated at the back of the Plough Pub opposite Majestic Wine, on the Kingston Rd roundabout). The food was cooked freshly to order and all 17 of us had an absolutely delicious meal. The service and atmosphere was voted to have been one of the best we have had so we will definitely return in the coming months.

*Jan Gapper*

#### Theatre Group

Seven of us went to see Hairspray which many had not seen before or were familiar with. The music / dancing etc was good but the storyline disappointed and was felt not to be very politically correct, a little out of step with today's thinking. This seemed to be the general feeling from all those who watched it. It was however an enjoyable evening watching the singing and dancing.

We are going to see a local production of Fiddler on the Roof in May but need someone to nominate a show to see in June. Come on theatre goers, we need you.

*Sue Bacon*



### WHAT HAVE WE BEEN DOING THIS MONTH?

#### Walkers

##### Wednesday Longer Walkers

The group had a fabulous day for our delayed post-Christmas lunch walk

We started at West Horsley church, Sheepheas in wonderful sunshine and walked through fields and woodland absorbing the swathes of bluebells and cowslips. A needed coffee was bought at a very busy Hatchlands and we then finished off by enjoying lunch at Squires Garden Centre.



*June Barber*

##### Thursday Longer walks group

A small select group set off on our April walk to see the bluebells at White Down. We did see some but we were a week or two early. It was shorter than most of our walks but was very enjoyable. Having managed not to get lost on the walk there was excitement to be had on our return to the car. Our driver, who will remain nameless, had locked her keys in the car. Due to the wonders of modern technology she was able to ring her husband, elsewhere in Surrey, who eventually managed to unlock it remotely! After all the excitement we ended the morning with coffee in the sun at KG5.



*Sue Yandell*

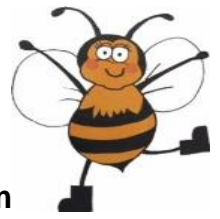




# BOOKHAM BEES WI

## Newsletter 83– May 2025

Bookham Bees meet the 1<sup>st</sup> Wednesday of the month,  
in The Old Barn Hall, Church Road, Great Bookham 7.15pm for 7.30pm



### BEES NEWS and Future Events

#### Monthly Meeting

This month we hear about the amazing work and involvement with The Orpheus Trust. I can assure you this is an excellent talk, and one you will find absorbing.

We will also be giving out several notices and important information so would love you not to miss this.

Money for raffle and refreshments may be useful.

#### June Meeting

This will be an evening of preparation for Village Day. You do NOT need to be good at or enjoy crafts as there are many tasks to complete which we need help for. Your attendance and support will be much appreciated. We will also have fun and chat so it will not all be work!

If you have not already signed up to help on the day this will be the chance to have checked your diary and be ready to choose your slot. Thank you so much.

#### Quiz Night

Don't forget our **quiz night this year is on Friday May 9<sup>th</sup>**.

This promises to be a fun evening and of course an excellent opportunity to show your skills and to raise money for CRY, our current charity.

A few last minute tickets are available from Gaye, at £15 a head, with payment to be transferred to the Bees account, as with your membership. **Don't forget to bring crockery cutlery and drink with you, and any snacks you fancy.**

**Bookham Bees WI , Branch 30-84-46, Account 36443768**  
**Marking your payment -quiz**

**The tables are of 8 but do not worry as we can easily join people to make 8. We are a friendly group so everyone welcome.**

#### Expenses

Several members kindly provide items for our events, eg, cooking ingredients. We are so grateful for your help, but do please feel free, and indeed we encourage you, to claim for what you buy. Claim forms are available from June Barber.

#### Flowers

Heather Broadhurst has done an amazing job making our tables beautiful each month and at events. We would now like to free up her time as she has duties on the committee. We are looking for a few people who would be willing to make up a team to provide a few flowers on each table for our events and meetings. Please see Heather if you could help. Thank you.

#### Events

There are many messages on our WhatsApp groups. It can get very confusing and replies and questions missed. The decision has been made therefore that general events such as The Afternoon Tea will **NOT** be made on WhatsApp. Please could **ALL** arrangements and replies be completed by email as it is easier to track. Thank you



#### Village Day

This year **Village Day is on June 21<sup>st</sup>**. With the lovely theme of Teddy Bears Picnic we feel this is a good opportunity to provide affordable fun for the children in the village. Please could you please volunteer to support this activity as this is an annual event we are well known for. It is actually a fun day!

To paraphrase Lord Kitchener 'Your WI needs you'! There are opportunities to volunteer before and on the day so do please respond. Thank you

#### White Elephant

**Heidi Marie George** has put out a plea for good quality White Elephant for her stall. Please deliver to 2 Sole Farm Avenue if possible on a Friday, or contact her on

[Heidi.george@sabp.nhs.uk](mailto:Heidi.george@sabp.nhs.uk) to make other arrangements. It made a lot of money for the community last year so please do support her. Thank you

#### Open Gardens

No Open Gardens this year but for the gardeners amongst us there is a charity plant sale and look round the garden at 52 Barn Meadow lane instead. June 15<sup>th</sup> 2-5pm

#### GROUPS

##### Art Group

We do not have an art group any more but if anyone wants to run one that would be amazing.

##### Book Group 3

Please note that Book Club Has changed to an afternoon group so if you would like to join them please talk to Jan Dunlop as there are 2 spaces.

##### Theatre Group

We have outings up to June but if you want this group to succeed please may I add a plea for members to offer suggestions and support in organising outings. It is great fun and we have seen some brilliant productions.

#### GROUP INFORMATION

Please be aware that if you can't attend an event you have booked for and need to cancel, that **you please check that the group leader hasn't incurred any expenditure on your behalf.**

*Jenny Bissell*

#### Events and activities

Any ideas for outings or activities are always welcome. If you have any ideas or interests, please do bring them to a committee member

Don't forget as well the many courses, ideas, activities, and items to read online from the WI. Do have a look if you are indoors on a rainy day.

[www.thewi.org.uk](http://www.thewi.org.uk) or

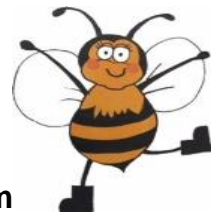
[Surrey Federation of Women's Institutes \(surreyfedwi.org.uk\)](http://Surrey Federation of Women's Institutes (surreyfedwi.org.uk))





# BOOKHAM BEES WI

## Newsletter 83– May 2025



Bookham Bees meet the 1<sup>st</sup> Wednesday of the month,  
in The Old Barn Hall, Church Road, Great Bookham 7.15pm for 7.30pm

### BOOKHAM BEES' GROUPS

#### Air fryer Group

A virtual group sharing tips and successes and failures with occasional small group meet ups.  
For details contact Debra Nunan on [Dn1969@hotmail.com](mailto:Dn1969@hotmail.com)

#### Book Club 1

Full at present. For waiting list contact Gaye Burt: [gayegoddard@hotmail.co.uk](mailto:gayegoddard@hotmail.co.uk)

#### Book Club 2 –

Full at present. Meet on differing evenings. Contact Anne Tait: [annetait1@btinternet.com](mailto:annetait1@btinternet.com)

#### Book Club 3 & 4

3 . Meet 4<sup>th</sup> Tuesday of each month, in the afternoon 1-2.45pm. Currently 2 spaces, please contact Jan Dunlop:  
4 Meet 4<sup>th</sup> Tuesday at 10.15am [jetdunlop@gmail.com](mailto:jetdunlop@gmail.com)

#### Bridge

We now have 2 bridge groups  
If you play bridge and are interested in joining, please contact: 1- Jane Carradine: [jschome03@gmail.com](mailto:jschome03@gmail.com)  
2 - Liz Roberts: [larrylizr@btinternet.com](mailto:larrylizr@btinternet.com)

#### Cheese and Wine Group

To express interest please contact [julie\\_ryder@outlook.com](mailto:julie_ryder@outlook.com).

#### Cinema/Movie Group

Bee Movies meet on the last Monday of the month We make arrangements through our WhatsApp group once film has been chosen. If you would like to be added, please send your mobile phone number to [kmtgaunt@me.com](mailto:kmtgaunt@me.com)

#### Coffee Mornings at The Vineries

Usually, 10.30 on different days of the week. Please contact Pam Ingledew If you would like to attend. [pamandgeoff6@icloud.com](mailto:pamandgeoff6@icloud.com)

#### Family History Group

3rd Tuesday 2pm.Full but or details contact Judith Witter: [judithwitter@hotmail.com](mailto:judithwitter@hotmail.com)

#### Gardening

Contact Diane Poole to join the active group & pick up lots of tips via WhatsApp. Visits and gatherings from Spring until the bad weather. [diane.poole25@googlemail.com](mailto:diane.poole25@googlemail.com)

#### Gin Club 1

For enquiries please contact Jan Gapper: [jangapper@gmail.com](mailto:jangapper@gmail.com)

#### Gin Group 2

For enquiries please contact Moira Dyson at [moiradyson@gmail.com](mailto:moiradyson@gmail.com)

**Knit & Crochet** – Full at present. For waiting list or to set up another group contact Karen Tranter: [Karen.tranter1@btinternet.com](mailto:Karen.tranter1@btinternet.com)

#### Lunch Group

Please contact Julie Alderman to express interest. Full but lunch group 2 can be started. [Aldermanj0@gmail.com](mailto:Aldermanj0@gmail.com)

#### London Walking Bees

A new group with members organising walks in London. Please contact Denise Bottomley [denisevbottomley@msn.com](mailto:denisevbottomley@msn.com) or 07866 936878

#### Pub Nights

2nd Wednesday of the month at The Olde Windsor Castle Pub 7pm  
For more details, please email Vikki: [the7thwife@gmail.com](mailto:the7thwife@gmail.com)

#### Sewing Group

1st Thursday of the month at The Community Room, King George V Hall, Effingham 1.30-4.30. If you would like to join us, to sew, knit or just watch and learn, please contact Fiona Goldsmith: [Fiona\\_goldsmith@hotmail.com](mailto:Fiona_goldsmith@hotmail.com)

#### Sunday Roast Lunch Group

2<sup>nd</sup> Sunday of the month at various venues  
Please contact Sandra Dawson for further details [myrtle.dawson@btinternet.com](mailto:myrtle.dawson@btinternet.com)

#### Supper Group

Meets monthly on varying days of the week at different venues, organised by a different member each month. To join and for further details please contact Sandra Dawson: [myrtle.dawson@btinternet.com](mailto:myrtle.dawson@btinternet.com)

#### Theatre Group

If you would like to join or have ideas of productions you would like to see please, contact Sue Bacon: [suebacon06@gmail.com](mailto:suebacon06@gmail.com)

**Ukulele** Please contact June Barber if you would like to join: Dormant at the moment [jbrb6@aol.com](mailto:jbrb6@aol.com)

#### Walking Groups

**Walkie Talkie 1 – Every Wednesday 8.00am** prompt  
Meet at Tunnel Car Park, Bookham Common.  
Janice Evans: [jevanshome123@gmail.com](mailto:jevanshome123@gmail.com)

**Walkie Talkie 2 – Every Monday at 09.30am**  
Tunnel Car Park, Bookham Common.  
June Barber: [Jbrb6@aol.com](mailto:Jbrb6@aol.com)

**Walk Third Wednesday each month at 10.00am**  
approx. 6 miles Contact June Barber: [jbrb6@aol.com](mailto:jbrb6@aol.com)

**Walk First Thursday each month at 10.00am**  
approx. 4 miles. Group full but accepting a waiting list.  
Julie Ryder: [julie\\_ryder@outlook.com](mailto:julie_ryder@outlook.com)

#### Welfare Officer

Janice Evans is our welfare officer. Please contact Janice if you know of any member who is unwell, been in hospital or going through a difficult time.  
Janice's email is: [Jevanshome123@gmail.com](mailto:Jevanshome123@gmail.com)

#### Web Site

<https://bookhambeeswi.org>