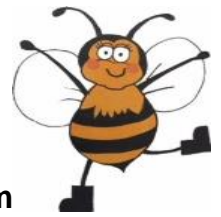




BOOKHAM BEES WI

Newsletter 84– June 2025



Bookham Bees meet the 1st Wednesday of the month,
in The Old Barn Hall, Church Road, Great Bookham 7.15pm for 7.30pm

EVENTS FOR JUNE

MONTHLY MEETING 4TH June

PREPARATION FOR VILLAGE DAY
with chatter/fun/ support for the stall

Monday	2 nd	Cinema group
Tuesday	3 rd	Gardening Afternoon Tea
Wednesday	4 th	Meeting
Thursday	5 th	Thursday Walkers Sewing Group Book Group 2
Sunday	8 th	Sunday lunch Group
Tuesday	10 th	London Walking Group
Wednesday	11 th	Coffee Morning Pub Night
Tuesday	17 th	Family History group
Friday		Gin Group1
Wednesday	18 th	Wednesday Walkers
Thursday	19 th	Lunch Group
Friday	20 th	Gin Group 1
Tuesday	24 th	Book Group 3 Book Group 4
Wednesday	25 th	Supper Group
Monday	30 th	Cinema Group
Monday mornings		Walkie talkie 2 9.30am
Wednesday mornings		Walkie talkie 1 8.00am

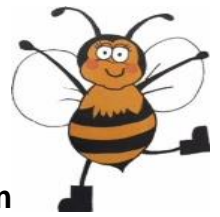




BOOKHAM BEES WI

Newsletter 84– June 2025

Bookham Bees meet the 1st Wednesday of the month,
in The Old Barn Hall, Church Road, Great Bookham 7.15pm for 7.30pm



FUTURE MONTHLY MEETINGS 2025

JULY 2nd

MARY FRANCES TRUST

This charity offers mental health and wellbeing support to anyone over 16 years old. Founded 30 years ago and based in Leatherhead, it came second in our vote for a charity to support. Come and see how to protect and help ourselves.

AUGUST 6TH

DRINKS AND NIBBLES ON THE GREEN with fun and games!

SEPTEMBER 3rd

SIGN LANGUAGE

Lindsay Burrell changes image from her fun Burlesque talk to bring us an engaging talk on her other love, communicating with those who have difficulties speaking. Well worth listening to this entertaining speaker.

OCTOBER 1ST

FIRST RESPONDERS

Another chance to refresh yourselves on life saving techniques. The team was fantastic last year so do attend whether you need to refresh or learn from the beginning. All skills need reinforcing regularly.

NOVEMBER 5TH

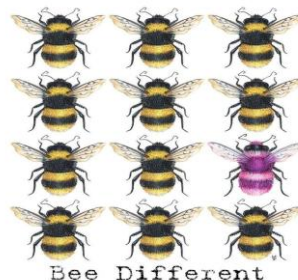
CARDIAC RISK IN THE YOUNG (CRY)

A talk from our charity of the year who, since 1995, have been working to reduce the incidence of sudden cardiac death through screening, support and research. There is much to learn here that could affect our children and grandchildren. This is also our AM month.

DECEMBER 3RD

A LOVELY SURPRISE CHRISTMAS MEETING

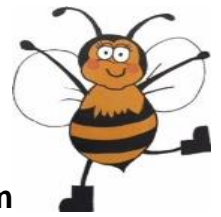
Watch this space!!





BOOKHAM BEES WI

Newsletter 84– June 2025



Bookham Bees meet the 1st Wednesday of the month,
in The Old Barn Hall, Church Road, Great Bookham 7.15pm for 7.30pm



WHAT HAVE WE BEEN DOING THIS MONTH?

MAY MEETING

This month we had an enthralling talk on the work of the Orpheus Trust, set up years ago by Richard Stilgoe. They provide residential education for young people aged 18-21 with a wide range of disabilities, and have an excellent reputation for the level of education and finding future employment for their students, well above the national average. Anne Lovelace MBE brought 3 ladies to accompany her. One was Charlotte, an ex-student, now ambassador, with a wide ranging voice, who entertained us with three songs from her repertoire. Beautiful. We learnt much, and were entertained too! After that we enjoyed delicious refreshments so thank you to the ladies busy in the kitchen.



To finish off in style we could not pass by the birthday of our most senior member, Beryl, who had recently enjoyed her 95th birthday. What an event! Jenny marked this special day and presented Beryl with a bouquet while we sang Happy Birthday. Congratulation Beryl!!



Groups

Air fryer Group

The air fryer group continues to share recipes, advice, programmes to watch and discussions and is remaining on line only for the time being. If anyone would like to host a gathering, or suggest a demonstration or similar then do not hesitate to contact the members.

Book Groups

Book Group 2

The Secret Scripture. Author Sebastian Barry
A mental hospital is about to be shut down, and the psychiatrist tries to investigate the history of his 100 patient who was committed as a young woman, her record long lost or eaten by the rats. Meanwhile, she is secretly writing her journal – to be found after her death. The story starts in 1930s rural Ireland, against the background of The Troubles and the control and power of the Catholic Church.

Although we really liked this book and the characters, it was difficult to get into initially. Personally, I enjoyed hearing a little of the social history of that time, and has led me to investigating more of my family history.

We scored it 7.5

Anne Tait

WHAT HAVE WE BEEN DOING THIS MONTH?

Book Group 3

The Flat Share by Beth O'Leary

Leon & Tiffany have serious life issues & financial strains. Leon works nights & doesn't need his flat or bed during the night & Tiffany needs somewhere to live & sleep after working all day. They come to an arrangement after Leon advertises for a flatmate. They don't meet but arrange it all by email & Leon's girlfriend.

We really enjoyed this book & liked all the characters apart from horrible gaslighting Jason. The story is about supportive love & people healing from abuse, trauma & post-it notes!

The Book is serialised on Paramount +

Overall score 8.0

Book Club 3 has 7 members & we are looking for 2 lovely Bees to join our happy Group. We meet at 1pm on the 4th Tuesday of the month.



Jan Dunlop

Book Group 4

A Very Private Diary by Mary Morris

In 1939 18yr old Mary arrives in London from Ireland. Her diary records details of her life as a nurse. From nursing children during bombing raids in London to treating soldiers in Normandy & Belgium.

The book covers War & Romance. Some of us were surprised at the Social side of her life during the War but we felt it didn't go deeply enough into her private life. But then she wasn't to know her diary would go into print.

Many of us didn't like a diary type of book, some enjoyed first half but then found it boring & stopped enjoying it. Someone found the book overwhelming.

Overall score 5.7

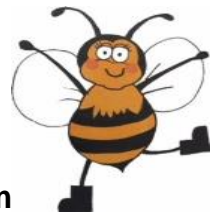


Jan Dunlop





BOOKHAM BEES WI Newsletter 84– June 2025



Bookham Bees meet the 1st Wednesday of the month,
in The Old Barn Hall, Church Road, Great Bookham 7.15pm for 7.30pm

WHAT HAVE WE BEEN DOING THIS MONTH?

Cheese and Wine

Our theme this month was Italian cheeses and wines. We started the evening with a glass of Prosecco Rose in Liz's garden - a real bonus to be able to sit out! We tasted two blue cheeses and a couple of hard/semi hard cheeses. Dolcelatte was a creamier, milder flavour than Gorgonzola, while Taleggio was a good all-rounder. June even managed to find a white wine called Pecorino which was delicious!!



Julie Ryder



Coffee Morning

The Bees were at the Vineries again on Thursday May 15. There were 8 of us this month. A good session as always, lots of chat and laughter with lovely refreshments. Next month our coffee session will be held on Wednesday June 11 at 10.30am. Let me know if you would like to join us.

Pam Ingledew

Gardening Group

The gardening group is still very busy with visits to both public, private and members gardens, giving and receiving advice, plant swapping but here is something different from one of our members.

Anne Grabaskey has been experiencing leaf cutter bees in her garden and has very kindly written a very interesting piece about them. Thank you Anne.

Leafcutter Bees

Have you ever emptied out a plant pot that has been sitting outside in the garden and found something that vaguely resembles a cigar or several cigars at the bottom of the pot? If so, did you know what it or they were? I found some a few years ago and had no idea what they were. I Googled it, as one does nowadays, and was amazed to find that they were the cocoons of leafcutter bees. I immediately put them back in a pot in some soil and left them outside in a sheltered shady position and hoped that I hadn't disturbed them too much.

I have found many cocoons since then, and have also seen bees disappearing down holes in pots on the patio. This year there are at least four or five leafcutter bees building their cocoons in pots in my greenhouse. All day long, apart from the rare occasions when it's been raining, there is the hum of bees, as they fly in and out carrying pieces of leaf. It's really fascinating!

If you would like to read more about them, you can go on the following sites:

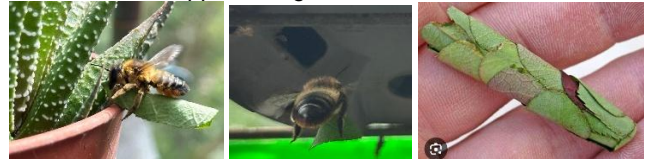
<https://www.rhs.org.uk/biodiversity/leaf-cutting-bees>

<https://www.wildlifetrusts.org/wildlife-explorer/invertebrates/bees-and-wasps/patchwork-leaf-cutter-bee>

<https://www.bumblebeeconservation.org/making-a-home-for-leaf-cutter-bees/>

WHAT HAVE WE BEEN DOING THIS MONTH?

The first photo shows one of the leafcutter bees carrying a piece of leaf to take down a hole in the top of one of my pots in the greenhouse. The second photo shows a leafcutter bees approaching a hole in the bottom of one of my pots in the greenhouse. The third photo which is not one of mine, is of a leafcutter bees approaching cocoon.



Anne Grabaskey

Gin Group 1

Six of us met for Gin Club this month. We sampled four different combinations of gin and flavoured tonics but all agreed we preferred traditional Indian tonic. We then tried three cocktails, The Hartley, Lillet Rose Cocktail and Riviera Snob. Our favourite was The Hartley, which included a small amount of orange juice and Campari.



Lunch Group

Lunch club met at the very busy Vineries this week. Only 4 of us but it made chatting very easy!

Next lunch is Thursday 19th June at the Vineries.

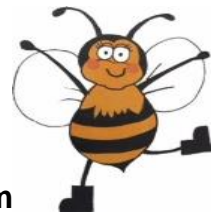
Julie Alderman



I wonder which of us could! 😊



BOOKHAM BEES WI Newsletter 84– June 2025



Bookham Bees meet the 1st Wednesday of the month,
in The Old Barn Hall, Church Road, Great Bookham 7.15pm for 7.30pm

WHAT HAVE WE BEEN DOING THIS MONTH?

Sewing Group

This month our stalwart team continued the making of teddy bears for the village day stall. We make over twenty and worked very well as a team. Thank you ladies for all your work.



Supper group

Eleven bees had a very tasty meal at El Rincon restaurant at Tattenham Crescent near Epsom racecourse this month. Most of us intended to have only 2 courses but the desserts, especially the raspberry and cream millefeuille were too good to miss out on!



Karen Edney

Theatre Group

Last night a small group of bees went to the Nomad Theatre in Horsley to see Fiddler on the roof.

What a fantastic theatre, an amazing performance by a group of very talented actors including 3 of our very own bees- Sandra Dawson, Irene Thomas and Julia Tribe.

Well done to all of them.

The show was fabulous a great evening had by all.

Sue Bacon



WHAT HAVE WE BEEN DOING THIS MONTH?

Walkers

Wednesday Longer Walkers

The walking group had a walk to Ranmore common this month- a steep climb up; however there was coffee and wonderful views at Ranmore, which we followed by a walk back to Polesden Lacey for more coffee and hot chocolate.



June Barber

Thursday Longer Walkers

A select group of 4 headed out on a very hot and sunny day at the start of the month, walking around Papercourt Lake and the Wey Canal in Ripley. We managed to stay in the shade most of the walk, and enjoyed stunning scenery along the route. We ended our walk with well-deserved coffee at Ferma, the farm shop on Ripley High Street.



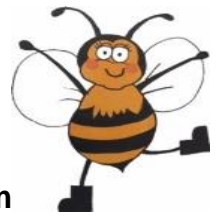
Julie Ryder





BOOKHAM BEES WI

Newsletter 84– June 2025



Bookham Bees meet the 1st Wednesday of the month,
in The Old Barn Hall, Church Road, Great Bookham 7.15pm for 7.30pm

BEES NEWS and Future Events

Monthly Meeting

This will be an evening of preparation for Village Day. You do NOT need to be good at or enjoy crafts as there are many alternative tasks to complete which we need help for. Your attendance and support will be much appreciated. We will also have fun and chat so it will not all be work!

Quiz Night

A very successful evening was held as a social event and to raise money for our charity, CRY. It was an evening full of fun and laughter and delicious food provided again by Connisbee's. There was rivalry between the teams but it seemed as much of an honour to come last as first! We raised over £400 on the raffle for CRY so we all went home tired but happy. Thanks to the Committee and members who stepped in on the night to offer help with the organising.



Expenses

Several members kindly provide items for our events, eg, cooking ingredients. We are so grateful for your help, but do please feel free, and indeed we encourage you, to claim for what you buy. Claim forms are available from June Barber.

Events

There are many messages on our WhatsApp groups. It can get very confusing and replies and questions missed. The decision has been made therefore that general events such as The Afternoon Tea will **NOT** be made on WhatsApp. Please could **ALL** arrangements and replies be completed by email as it is easier to track. Thank you



Village Day

Thank you so much to all who have volunteered to help at the Village Day stall. We have now filled the rota and I am sure we will have a very successful day. It promises to be great fun.

Village week Quiz

Thank you to the amazing Bees who volunteered to represent the Bees WI at this evening. We all wish them the best of luck and hope they have a wonderful evening.

GROUPS

We have a very active list of groups and leaders who work very hard for those groups. Please can we all remember though that everyone is a volunteer and has to fit duties around their day to day demands.

To that end we are asking all group members to take a turn organising events for their group, be it a supper evening, theatre trip or anything else appropriate. This may need a rota drawn up to make sure the same people are not always given the same responsibilities or however the group thinks is fair. It will be taken into account though that not everyone has the same abilities and skills so you will not be asked to do something alone or that you are very uncomfortable with. We just all need to support each other..

Art Group

We do not have an art group any more but if anyone wants to run one that would be amazing.

Book Group 3

Please note that Book Club Has changed to an afternoon group so if you would like to join them please talk to Jan Dunlop as there are 2 spaces.

Theatre Group

We have outings up to June but if you want this group to succeed please may I add a plea for members to offer suggestions and support in organising outings. It is great fun and we have seen some brilliant productions.

GROUP INFORMATION

Please be aware that if you can't attend an event you have booked for and need to cancel, that **you please check that the group leader hasn't incurred any expenditure on your behalf.**

Jenny Bissell

Events and activities

Any ideas for outings or activities are always welcome. If you have any ideas or interests, please do bring them to a committee member

Don't forget as well the many courses, ideas, activities, and items to read online from the WI. Do have a look if you are indoors on a rainy day.

www.thewi.org.uk or

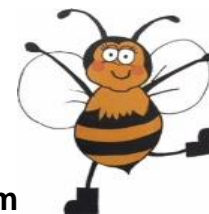
[Surrey Federation of Women's Institutes \(surreyfedwi.org.uk\)](http://Surrey Federation of Women's Institutes (surreyfedwi.org.uk))





BOOKHAM BEES WI

Newsletter 84– June 2025



Bookham Bees meet the 1st Wednesday of the month,
in The Old Barn Hall, Church Road, Great Bookham 7.15pm for 7.30pm

BOOKHAM BEES' GROUPS

Air fryer Group

A virtual group sharing tips and successes and failures with occasional small group meet ups.
For details contact Debra Nunan on Dn1969@hotmail.com

Book Club 1

Full at present. For waiting list contact Gaye Burt: gayegoddard@hotmail.co.uk

Book Club 2 –

Full at present. Meet on differing evenings. Contact Anne Tait: annetait1@btinternet.com

Book Club 3 & 4

3 . Meet 4th Tuesday of each month, in the afternoon 1-2.45pm. Currently 2 spaces, please contact Jan Dunlop:
4 Meet 4th Tuesday at 10.15am jetdunlop@gmail.com

Bridge

We now have 2 bridge groups
If you play bridge and are interested in joining, please contact: 1- Jane Carradine: jschome03@gmail.com
2 - Liz Roberts: larrylizr@btinternet.com

Cheese and Wine Group

To express interest please contact julie_ryder@outlook.com.

Cinema/Movie Group

Bee Movies meet on the last Monday of the month We make arrangements through our WhatsApp group once film has been chosen. If you would like to be added, please send your mobile phone number to kmtgaunt@me.com

Coffee Mornings at The Vineries

Usually, 10.30 on different days of the week. Please contact Pam Ingledew If you would like to attend. pamandgeoff6@icloud.com

Family History Group

3rd Tuesday 2pm.Full but or details contact Judith Witter: judithwitter@hotmail.com

Gardening

Contact Diane Poole to join the active group & pick up lots of tips via WhatsApp. Visits and gatherings from Spring until the bad weather. diane.poole25@googlemail.com

Gin Club 1

For enquiries please contact Jan Gapper: jangapper@gmail.com

Gin Group 2

For enquiries please contact Moira Dyson at moiradyson@gmail.com

Knit & Crochet – Full at present. For waiting list or to set up another group contact Karen Tranter: Karen.tranter1@btinternet.com

Lunch Group

Please contact Julie Alderman to express interest. Full but lunch group 2 can be started. Aldermanj0@gmail.com

London Walking Bees

A new group with members organising walks in London. Please contact Denise Bottomley denisevbottomley@msn.com or 07866 936878

Pub Nights

2nd Wednesday of the month at The Olde Windsor Castle Pub 7pm
For more details, please email Vikki: the7thwife@gmail.com

Sewing Group

1st Thursday of the month at The Community Room, King George V Hall, Effingham 1.30-4.30. If you would like to join us, to sew, knit or just watch and learn, please contact Fiona Goldsmith: Fiona_goldsmith@hotmail.com

Sunday Roast Lunch Group

2nd Sunday of the month at various venues
Please contact Sandra Dawson for further details myrtle.dawson@btinternet.com

Supper Group

Meets monthly on varying days of the week at different venues, organised by a different member each month. To join and for further details please contact Sandra Dawson: myrtle.dawson@btinternet.com

Theatre Group

If you would like to join or have ideas of productions you would like to see please, contact Sue Bacon: suebacon06@gmail.com

Ukulele Please contact June Barber if you would like to join: Dormant at the moment jbrb6@aol.com

Walking Groups

Walkie Talkie 1 – Every Wednesday 8.00am prompt
Meet at Tunnel Car Park, Bookham Common.
Janice Evans: jevanshome123@gmail.com

Walkie Talkie 2 – Every Monday at 09.30am
Tunnel Car Park, Bookham Common.
June Barber: Jbrb6@aol.com

Walk Third Wednesday each month at 10.00am
approx. 6 miles Contact June Barber: jbrb6@aol.com

Walk First Thursday each month at 10.00am
approx. 4 miles. Group full but accepting a waiting list.
Julie Ryder: julie_ryder@outlook.com

Welfare Officer

Janice Evans is our welfare officer. Please contact Janice if you know of any member who is unwell, been in hospital or going through a difficult time.
Janice's email is: Jevanshome123@gmail.com

Web Site

<https://bookhambeeswi.org>